

OWS-30

OIL WATER SEPARATOR

- SUMP PUMP OR DIAPHRAGM PUMP RECOVERY
- UP TO 30 GPM WATER PROCESS RATE
- REMOVES 99% OF OIL IN TYPICAL WASH WATER



SEPARATION EFFICIENCY FOR THE MOST STRINGENT DISCHARGE REQUIREMENTS

The Riveer OWS oil/water separator system is a modular, engineered oil/water separator that can easily be integrated with other equipment to meet the industrial user's needs.

The treatment system's single stainless steel tank assembly saves valuable floor space and time during installation. Designed to continuously skim the water's surface to remove even the faintest trace of oil. Once intercepted, the oil is then transferred to a containment compartment where it can be removed easily. A sludge draw-off valve is located on the back of the unit where collected solids can be discharged.

The Riveer OWS is the perfect solution for very low (PPM) discharge level situations required for industrial plants, commercial garages, and cleaning applications. The OWS-30 is capable of delivering discharges under 10 PPM.

RIVEER OWS AT A GLANCE:

- Simple, above-ground installation
- No filters, or chemicals – simple design
- Continuous skim assures efficient separation
- Easy modification allows wash water to be recycled
- Simple, minimal maintenance

THE PERFECT SOLUTION

- Industrial Plant
- Commercial Garages
- Cleaning Applications



KEY SYSTEM HIGHLIGHTS

- Sump pump or diaphragm pump recovery
- Oil coalescing media and disk skimmer with collection container
- Up to 30 GPM water process rate
- Weir tank design guided by API 421 specifications
- Effectively removes 99% of oil in typical wash water
- Single 110V, 1~, 60Hz power connection to run the entire machine
- 20ft ground-fault protected power cord provided

POWER REQUIREMENTS

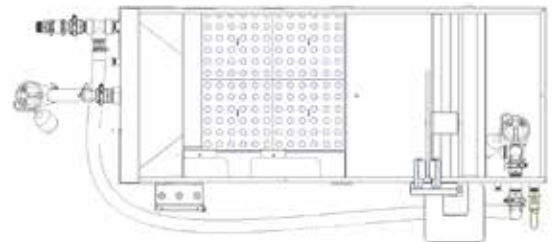
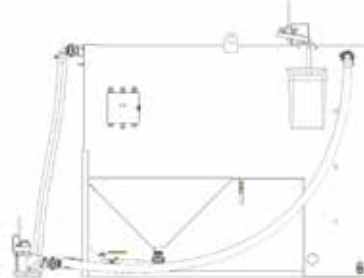
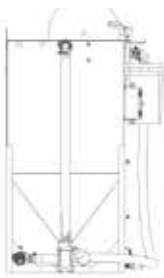
- 110V, 1PH, 60Hz, 3 Wire
- System equipped with 20ft of power supply cord with ground-fault protected plug

RIVEER OWS RECYCLING FEATURES

- The water treatment unit shall include the following:
 - Type 304L Stainless steel construction
 - 3 Chamber settling tank includes coalescing and filtration staging:
 - Laminar flow with velocity reducing inlet piping
 - 3 section tank with undercurrent design using stainless steel weir structures
 - 237 gallon coalescing tank:
 - 4 cu ft. of coalescing media with over 528 square foot of surface area
 - Highly efficient polypropylene media with 100% pass through design
 - Low velocity flow with modified horizontal fluid path design
 - High efficiency oil skimmer with external oil catch reservoir
 - Waterfall flow distribution through replaceable oil absorbent

OWS-30 GENERAL SPECIFICATIONS:

- Equipment Profile Dimensions: 96"L x 3'W x 76"H
- Equipment Weight: Approx. 700 Lbs. Dry
- Weir Tank Capacity: 367 Gallons
- Weir Tank Material: 304L Stainless Steel
- Weir Tank Process Rate: 30 gallons per minute
- System Electric: 110V, 1-single phase, 60Hz



Riveer employs a quality management system that is ISO 9001:2008 certified.
©2020 RIVEER. All rights reserved. Specifications subject to change. 6.8.2020

